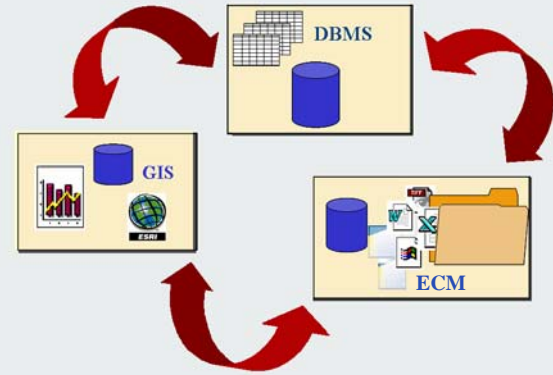


## PlaceLynx™ for ArcGIS

Make ArcGIS a gateway to enterprise information with PlaceLynx for ArcGIS and FileNet.

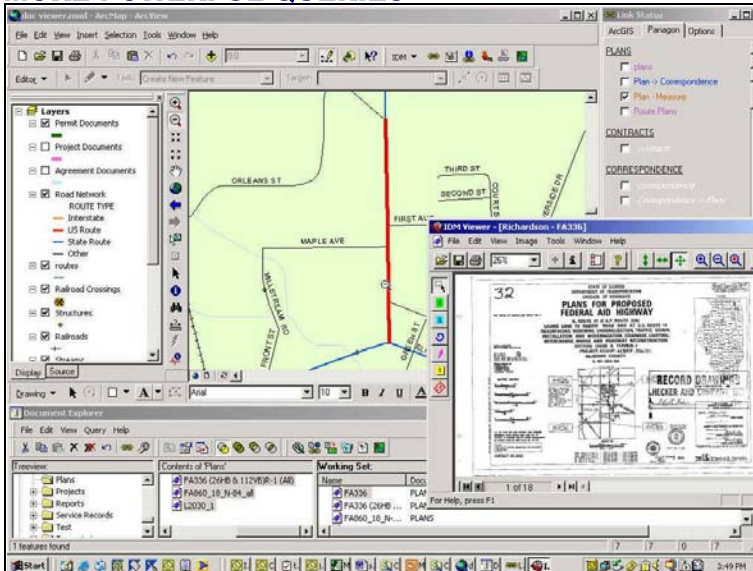
**FileNet** enterprise content management software (ECM) enables people to collaboratively create, manage, deliver, and archive the content that drives business operations.

**PlaceLynx™ for ArcGIS** connects a P8 or Panagon repository to ArcGIS creating what we call *spatially enabled documents*. PlaceLynx also interconnects tabular databases, providing users integrated access to the information they need, wherever it resides.



PlaceLynx™ enhances the reach and effectiveness of your GIS. A large percentage of the documents and files managed by utilities, energy companies, and government agencies describe something represented on a map. Because workers in these enterprises understand, use, and like maps, the GIS is often the most natural integration point for information of all sorts.

## MORE POWERFUL QUERIES



PlaceLynx™ brings the full power of GIS spatial processing to bear on the problem of document retrieval. Instead of browsing through folders for documents, or composing a query, a user can say, “I want these sorts of documents relevant to that thing there on the map.” He clicks in the map display and the documents appear. Or he can say, “Find the geo-registered files in my current map area and display them on the GIS canvas. Conversely, he can find documents in the repository, and then find related map features, address locations, or route measurements on the map.

New queries are made possible because both GIS and content management users can draw on more information. For example:

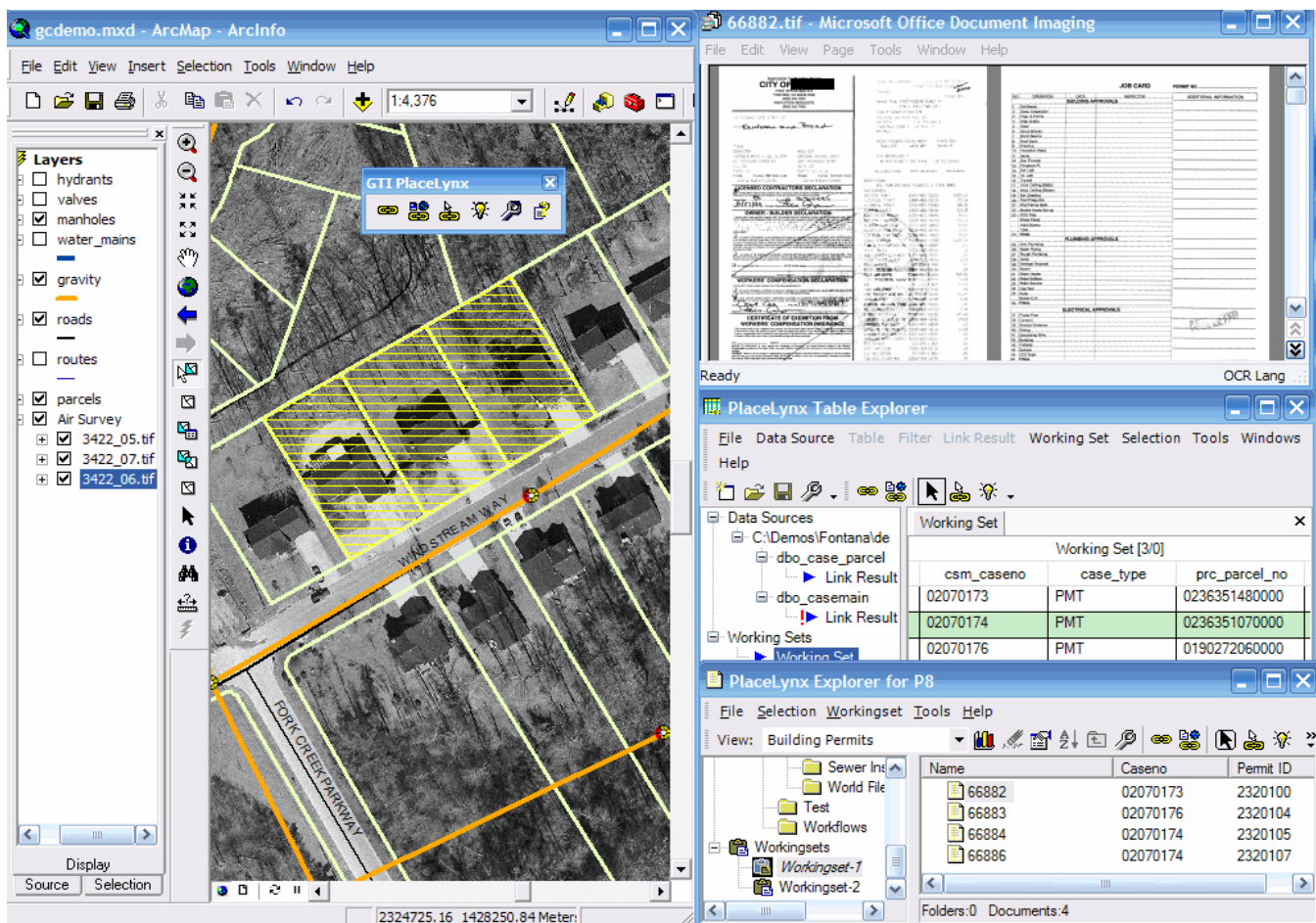
- An analyst examining a crime report can ask to see similar reports within a mile radius.
- A planner reviewing a variance application can retrieve other variances for surrounding parcels.
- A traffic analyst can find the most dangerous intersections by mapping accident reports.
- A pipeline maintenance coordinator can use inspection records to map compliance status.

## BETTER DATA MANAGEMENT

PlaceLynx™ removes the temptation to duplicate data between systems. For example, it might seem necessary to copy crime data into the GIS to make spatially oriented crime analysis possible. Information contained in CAD drawings may be copied into the GIS, or maps might be placed in the document repository. This redundant data creates an ongoing maintenance burden. PlaceLynx™ removes these kinds of requirements and makes it easier to design and maintain cleaner, more efficient databases.

## KEY FEATURES

- PlaceLynx™ is based on a flexible strategy for linking the schemas of the GIS and content repository. Documents and map features may be associated through a variety of different methods. Links can be based on key-foreign key relationships, addresses, route measurements, and coordinates stored with documents. Links can also search full-text indexed documents.
- Map features can be created from documents; property values can be moved from one system to another.
- Geo-registered and related files (world files, etc.) can be stored in the content repository.
- Link definitions are tolerant of differences in data formats between systems.
- Provides a bi-directional interface for both web and desktop.
- Incorporates integration with OLEDB databases. Databases such as those included in case management or work management systems can be interconnected with the GIS and/or the content repository.



The screenshot displays the PlaceLynx software interface, which integrates a GIS map with a document repository and a data table explorer.

**Map View (Left):** Shows a map of a residential area with various features highlighted. A yellow polygon outlines a specific area. The map includes labels for "WINDSTREAM WAY" and "FORK CREEK PARKWAY". A "GTI PlaceLynx" toolbar is visible over the map.

**Document Viewer (Top Right):** Displays a document titled "66882.tif - Microsoft Office Document Imaging". The document contains a "JOB CARD" with fields for "JOB NO.", "JOB DATE", "JOB TIME", "JOB LOCATION", "JOB DESCRIPTION", "JOB STATUS", "JOB COMMENTS", "JOB APPROVALS", and "JOB SIGNATURE".

**PlaceLynx Table Explorer (Bottom Right):** Shows a table with data sources and working sets. The table has columns for "Name", "Caseno", and "Permit ID".

Name	Caseno	Permit ID
66882	02070173	2320100
66883	02070176	2320104
66884	02070174	2320105
66886	02070174	2320107